



# Dino-Lite Earscope



# EarScope

The Dino-Lite EarScope is a digital otoscope that is easy to use and will be very helpful in general practice, in audiology and for ear, nose and throat specialists. With the EarScope you can easily inspect and photograph the ear canal, the ear drum and the outer ear.

Ear problems such as inflammation, clogging by accumulated ear wax or the presence of fluid behind the ear drum can be recognized quickly. The practitioner is always assured of a bright and clear image thanks to the built-in LED lights and adjustable magnification between 55x and 90x (1.3 Megapixel models).

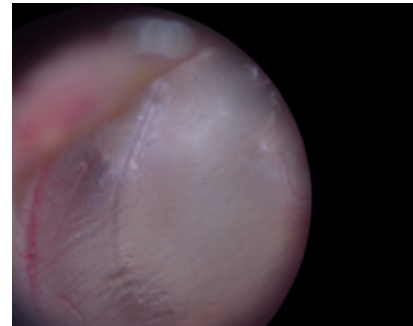
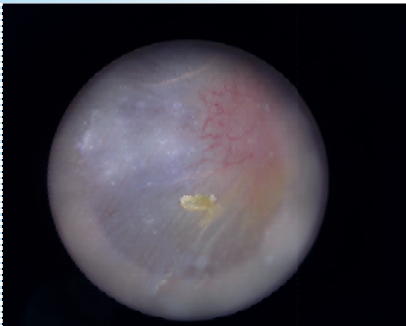
All Dino-Lite EarScopes have a USB connection and function independent of batteries. Therefore the EarScope is always ready for use. The image can be viewed on a computer screen to simplify the diagnosis and also allows the patient to see the images as well.

The images – either still photo or video - can be stored digitally and easily added to a patient file or forwarded to a colleague or specialist. All EarScopes are compatible with Windows and MacOS.

The EarScope Basic MEDL3E has a VGA resolution. The specula is disposable and can be cleaned for proper hygienic.

The MEDL4E EarScope Pro is intended for professional use, has a 1.3 megapixel resolution and comes with disposable specula of 3, 4 and 5 mm. Ten pieces of each size are included and re-ordering of the specula is possible.

The top model with a 1.3 megapixel resolution is the EarScope Pneumatic MEDL4EP. With this model, the physician has the additional function of blowing a puff of air into the ear canal which allows him to assess the mobility of the eardrum that can point to a glue ear. Just like the EarScope Pro this model has disposable specula, in this case 2.5 and 4 mm.



# Dino-Lite EarScope

## EarScope Basic MEDL3E

The EarScope Basic (MEDL3E) is a compact and safe solution to look at the ear. The cap is detachable for hygienical reasons. The MEDL3E has a 640x480 resolution and magnification of 20 ~ 30x. This model is delivered with disposable specula of 3, 4 and 5 mm (10 each).



usb 2.0



adjustable  
~20-30x



4 white leds  
non-switchable



VGA resolution  
640 x 480

## EarScope Pro MEDL4E

The EarScope Pro (MEDL4E) is a compact and safe solution for watching the eardrum and the external ear. The MEDL4E is the Pro model with 1,3 Megapixel resolution and a magnification of 55 ~ 90x. This model is delivered with disposable specula of 3, 4 and 5 mm (10 each).



usb 2.0



adjustable  
~55-90x



magnification  
lock



1.3 megapixel  
1280 x 1024



8 white leds  
switchable

## EarScope Pneumatic MEDL4EP

The EarScope Pneumatic (MEDL4EP) is a compact and safe solution for watching the eardrum and the external ear. The MEDL4EP has a 1.3 Megapixel resolution and a magnification of 55 ~ 90x. It comes with a rubber bulb that is squeezed to give a puff of air into the ear canal, which allows the doctor to see how the eardrum moves. This model is delivered with disposable specula of 2,5 and 4 mm (10 each).



usb 2.0



adjustable  
~55-90x



magnification  
lock



1.3 megapixel  
1280 x 1024



8 white leds  
switchable

## Dino-Lite EarScope in use

A general practitioner in Baarn, The Netherlands is using several Dino-Lite models: "My Dino-Lite EarScope provides beautiful images of the inside of the ear, I use it to inspect my patient's tympanic membranes. I can even inspect my own eardrum by means of the EarScope.

Because the Dino-Lite microscopes are directly connected to the USB port of my PC, the pictures can immediately be checked on a large screen and shared with my patients, batteries are never dead, the light is always good. As the Dino-Lite microscopes are connected to my PC, I can store and share images easily and quickly.

Pictures made with Dino-Lite can be stored in the Electronic Patient File simply by means of 3 mouse clicks. I can easily add pictures to my 'library' of ear affections. A picture says more than many words; the emergency of a patient's case can be judged very quickly. I am very fond of visualization."



HDE-01  
EarScope holder



WF-10  
work wirelessly



SW-F1  
footpedal - capture handsfree

**Dino-Lite**  
Digital Microscope Medical

Dino-Lite medical products are class I medical devices according to the Medical Devices Regulation (EU) 2017/745

2020Q1 Copyright © 2020 IDCP BV

[www.dino-lite.eu/medical](http://www.dino-lite.eu/medical)  
[www.idcpmedtech.eu](http://www.idcpmedtech.eu)

**IDCP**  
MEDTECH

IDCP B.V.  
Manuscriptstraat 12-14  
1321 NN Almere  
The Netherlands

Telephone: +31 (0) 20 6186322

[info@dino-lite.eu](mailto:info@dino-lite.eu)  
[info@idcpmedtech.eu](mailto:info@idcpmedtech.eu)